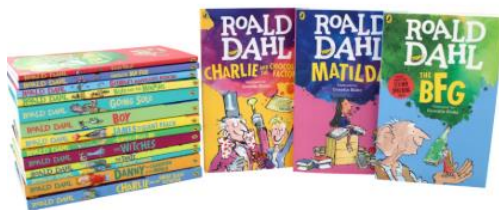


WHO WAS ROALD DAHL?



A. LISTEN AND AND WATCH.

<https://drive.google.com/file/d/13YLn64BqcDJteFRHXZmt1h9nizsoGyhx/view?usp=sharing>

<https://www.britannica.com/video/191884/Roald-Dahl-biography-children-Charlie-and-the>

B. WRITE TRUE OR FALSE NEXT TO THE SENTENCES. CORRECT THE FALSE ONES.

1. He was born in the U.S.A. in 1916.
2. He was an unhappy school boy.
3. He loved chocolate cakes.
4. He first worked for Shell Company in Asia.
5. In the 2nd World War he joined the army as a sailor.
6. He went to Washington.
7. He married an actress . They had 5 children.
8. He only wrote books for children.
9. His marriage with Patricia Neal ended in divorce.
10. He died in Oxford in 1999.

C. PUT THE WORDS IN ORDER.

<https://wordwall.net/resource/3341907/tmf-put-words-into-correct-order>

D. READ AND COMPLETE THE ACTIVITY ONLINE. (Click finish, write your name and send)

<https://www.liveworksheets.com/c?a=s&g=298%20HORA%20MAS&s=ENGLISH&t=c5hlksrcez&sr=n&l=xf&i=cuntuc&r=mn&db=0>

E. READING "THE MAGIC FINGER". Stop at " Late, that night... Mr Gregg went outside to get some wood for the fire" and answer the questions.

1. Who tells the story?
2. Where does she live?
3. Who are his neighbours?
4. What happened at school with Mrs Winter?
5. What do the Greggs like doing and what does the girl think about that?
6. How does the magic finger work?
7. What will happen next? Predict!

Send your work to ingles298susana@gmail.com